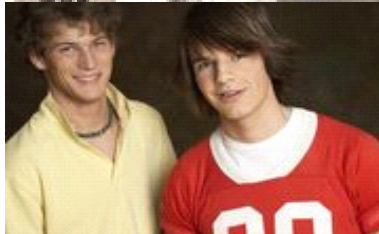
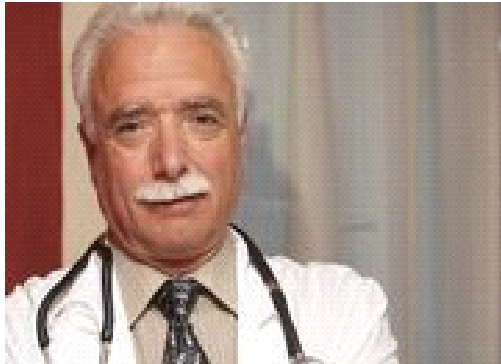
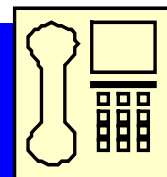
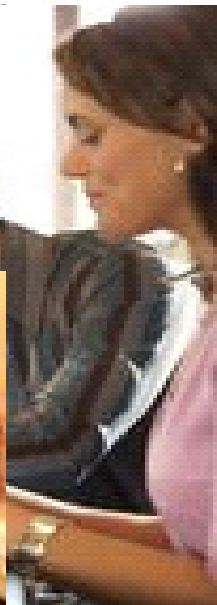


ProMedical Plan[®]



Primary Care Physicians
Médicos Primarios



1-866-PROMEDI

3/9/2010

PRIMARY CARE PHYSICIANS

Miami - Dade County

North West

(*) PCP with Malpractice Insurance Waiver

Medical Center	Address/Phone Number	M.D.	Spec.	PCP #	Age	Lang.
Glez & Glez Medical Center (*)	3804 NW 167th St. Miami Gardens, FL 33054 (305) 624-2700	Cusco-Prieto, Baudilio	GP	0288	1+	English Spanish
Elite Health & Rehab Center (*)	6450 W. 21 Ct. Suite # 200 Hialeah, FL 33016 (305) 698-0806	Flores, Lucky Gonzalez, Manuel de	FP IM	0198 0198	4+ 4+	English Spanish French
Gilda de la Calle (*)	1435 W. 49 Place Suite 400B Hialeah, FL 33012 (305) 823-5730	De la Calle, Gilda	GP	0200	0+	English Spanish
Palm Springs Pediatrics Association	5590 W. 20 Ave. Suite 100-101 Hialeah, FL 33016 (305) 556-4420	Hidalgo, Ausberto	PED	0056	0-21	English Spanish
Hernando Alvarez (*)	7100 West 20 Ave. Suite # 803 Hialeah, FL 33016 (305) 556-3122	Alvarez, Hernando	FP	0121	10+	English Spanish
Damar Medical Center	900 West 49th St. Suite 440 Hialeah, FL 33012 (305) 820-1944	Altamirano, Dario	FP	0205	5+	English Spanish
CONTINUCARE Hialeah	3233 Palm Avenue Hialeah, FL 33012 (305) 826-0660	Garcia Blanco, Miguel Hurtado, Adriana Vasquez-Pausa, Antonio Andux, Carmen Deulofeu, Ruben Vasquez, Amarilis Irabien, Martha Theus, Nadine	IM FP GP IM PED FP IM PED	0153 0153 0153 0153 0153 0153 0153 0153	18+ 18+ 18+ 18+ 0-18 18+ 17+ 0-18	English Spanish
H & L Medical Center (*)	2750 W. 68th Street Suite # 224 Hialeah, FL 33016 (305) 558-8687	Machado, Ramon Arce-Nunez, Esperanza	GP FP	0260 0260	0+ 0+	English Spanish
Florida Kidz & Families Medical Center	551 East 49th Street First Floor Hialeah, FL 33013 (305) 687-7779	Hershman, Kenneth Hershman, Lloyd	IM GP/PED	0203 0203	0+ 0+	English Spanish
Ambert Medical Care Center(*)	15495 Eagle Nest Lane, Ste 100 Miami Lakes, FL 33014 (305) 556-0021	Benitez, Ania Pantaleon, Eric Serize, Arturo	GP GP PA	0163 0163 0163	7+ 18+ 17+	English Spanish French
Doctors Medical Centers	20215 NW 2nd Ave. Suite # 1 North Miami. FL 33169 (305) 652-4542	Chapunoff, Eduardo Carbonell, Sheila Gray, Patrick	IM IM/GER IM	0088 0088 0088	18+ 18+ 18+	English Spanish
Inter American Medical Center (*)	7101 West Flagler Street Miami, FL 33144 (786) 388-9696	Otero, Leandro Fernandez, Daniel	IM FP	0137 0137	16+ 18+	English Spanish French
Vital Medical Center (*)	8300 W. Flagler St., #175 Miami, FL 33144 (305) 220-0300	Lora, Fernando	GP	0284	17+	English Spanish
Luis De Armas, M.D., P.A.	11373 W. Flagler St., Ste. # 212 Miami, FL 33174 (305) 220-7730	De Armas, Luis	GP/PED	0286	0+	English Spanish

PRIMARY CARE PHYSICIANS

Miami - Dade County

North West

Medical Center	Address/Phone Number	M.D.	Spec.	PCP #	Age	Lang.
Hispanic Healthcare Center	1774 SW 8th St., Ste. A Miami, FL 33135 (305) 642-7474	Canino, Pablo	PED	0285	0+	English Spanish
Araceli Yapor	7975 NW 154th St., Ste.# 270 Miami Lakes, FL 33016 (305) 698-6030	Yapor, Araceli	GP	0042	1+	English Spanish
Edouard, Pierre-Richard	16161 NW 57 Ave. Miami Lakes, FL 33014 (305) 625-3409	Edouard, Pierre-Richard	FP	0093	0+	English Spanish Creole
Centro Rodolfo Sidron (*)	7285 West Flagler Street Miami, FL 33144 (786) 388-9877	Sidron, Rodolfo	PED	0204	0-21	English Spanish
CONTINUCARE North Miami Beach	16800 NW 2nd Ave. Suite 103 North Miami Beach, FL 33169 (305) 651-3543	Cortes, Carlos	IM	0181	18+	English Spanish
Doctors Medical Centers	7900 NW 27 Ave. Suite # 150 Miami, FL 33147 (305) 652-4542	Castano, Luis Pierre, Alix Varon, Juan Chapunoff, Eduardo	FM PED IM IM	0189 0189 0189 0189	0+ 0-18 18+ 18+	English Spanish Creole
Health Solutions Group (*)	8247 NW 36th Street Miami, FL 33166 (305) 715-9572	Gonzalez, Francisco	GP	0166	10+	English Spanish
Healthy Kidz Pediatrics	9615 NW 41 St. Doral, FL 33178 (305) 599-8082	Granados, Maria	PED	0317	0-21	English Spanish
Waldo Acebo, M.D., P.A. (*)	9851 NW 58 ST Suite # 125 Doral, FL 33178 (305) 403-1035	Acebo, Waldo	FP	0319	7+	English Spanish

PRIMARY CARE PHYSICIANS

Miami - Dade County

North West

Medical Center	Address/Phone Number	M.D.	Spec.	PCP #	Age	Lang.
Doctors Medical Centers	1240 NW 119th Street Miami, FL 33167 (305) 685-5688	Torrallas, Alfredo	PED	0086	0-18	
		Chapunoff, Eduardo	IM	0086	18+	English
		Casanova-Romero, Paul	IM	0086	18+	Spanish
		De Olivera, Felipe	IM	0086	18+	Creole
		Vegas, Maria	FP	0086	1+	Portugu
		Palomino, Mario	GP	0086	18+	
Doctors Medical Centers	4888 NW 183 St. Suite # 101 Carol City, FL 33055 (305) 685-5688	Chapunoff, Eduardo	IM	0087	18+	English
		Casanova-Romero, Paul	IM	0087	18+	Spanish
		Acosta, Jose	PED	0087	0-18	
Glez & Glez Medical Center	3804 NW 167 th St. Miami Gardens, FL 33054 (305) 624-2700	Cusco-Prieto, Baudilio	GP	0288	1+	English Spanish
Doctors Medical Centers	4105 NW 135 Street Opa-Locka, FL 33054 (305) 685-5688	Alix, Pierre	PED	0090	0+18	English
		De Oliveira, Felipe	IM	0090	18+	Spanish
		Varon, Juan	IM	0090	18+	French
		Vegas, Maria	FP	0090	1+	Creole
		Palomino, Mario	GP	0090	18+	
H & L Medical Center (*)	3005 NW 7th Street Miami, FL 33125 (305) 644-7746	Machado, Ramon	GP	0261	0+	English
		Arce-Nunez, Esperanza	FP	0261	0+	Spanish
Medical Consulting Center (*)	3240 NW 7th St. Miami, FL 33125 (305) 649-0492	Abaunza, Ramiro	IM	0289	7+	English Spanish
Superior Healthcare (*)	10 NW 42nd Avenue Suite # 300 Miami, FL 33126 (305) 774-0742	Otero, Maritza	FP	0275	18+	
		Porro, Yamile	GP	0275	0+	English
		Jackson, Conchita	GP	0275	0+	Spanish
		Pena, Jose	GP	0275	0+	
Inter American Medical Center (*)	5378 W. 16 Ave. Hialeah, FL 33012 (305) 820-4101	Otero, Leandro	IM	0268	16+	English
		Fernandez, Daniel	FP	0268	18+	Spanish French

PRIMARY CARE PHYSICIANS

Miami - Dade County

North East

Medical Center	Address/Phone Number	M.D.	Spec.	PCP #	Age	Lang.
NOVA Southeastern UNIVERSITY	1750 NE 167th Street North Miami Beach, FL 33162 (954) 262-4101	Calzada, Pablo Bekic, Ronald Cohen, Peter Schaeffer, Judith	FP FP FP FP	0147 0147 0147 0147	16+ 0+ 16+ 0+	English Spanish
Exelsior Medical Center (*)	951 N.E. 167 St. Suite # 102 North Miami Beach, FL 33167 (305) 944-1122	Dwyer, Grace	FP	0185	3+	English
Practical Management, Inc.	16470 NE 10th Avenue North Miami Bch. FL 33162 (305) 651-9988	English, Scott R.	FP	0001	12+	English Spanish
North Miami Medical Center & Rehab	823 N.E. 125th St. North Miami, FL 33161 (305) 895-7840	Renelien, Jean	IM	0270	0+	English Spanish French Creole
New World Health Centers	6630 Biscayne Boulevard Miami, FL 33138 (305) 754-8966	Jean-Mary, Jean-Rony	FP	0122	0+	English Spanish Creole
Primary Care Physicians Group	4308 Alton Road Suite # 860 Miami Beach, FL 33140 (305) 604-2888	Merlino, Gary Shaffer, Robert Del Valle, Alejandro	IM IM IM	0179 0179 0179	18+ 18+ 18+	English Spanish Portug.

PRIMARY CARE PHYSICIANS

Miami - Dade County

South West

Medical Center	Address/Phone Number	M.D.	Spec.	PCP #	Age	Lang.
Josefa Binker, M.D., P.A.	70 NW 8th St. Homestead, FL 33030 (305) 242-5225	Binker, Josefa	FP	0287	5+	English Spanish
New World Health Centers	239 North Krome Avenue Homestead, FL 33032 (305) 245-7138	Jean-Mary, Jean-Rony	FP	0124	0+	English Spanish French Creol
Metro Med - Naranja (*)	27032 South Dixie Hwy Naranja, FL 33032 (305) 246-0240	Hernandez, Oscar L.	IM/PED	0044	0+	English Spanish
Metro Med - Kendall (*)	12510 N. Kendall Dr. Miami, FL 33186 (305) 279-1515	Hernandez, Oscar L.	IM/PED	0024	0+	English Spanish
Metro Med - Pinecrest (*)	15715 S. Dixie Hwy., # 407 Miami, FL 33157 (786) 227-6867	Hernandez, Oscar L.	IM/PED	0277	0+	English Spanish
Marichal & Prieto	11760 SW 40th Street, Suite # 347 Miami, FL 33175 (305) 553-1663	Prieto, Maria Isabel Marichal, Jose Rafael	IM IM	0192 0192	17+ 17+	English Spanish
New Life Medical Institute (*)	861 SW 8th Street Miami, FL 33130 (305) 857-9800	Machado, Esmildo	GP	0195	5+	English Spanish
Myriam Lacayo (*)	7821 Coral Way, Suite # 104 Miami, FL 33155 (305) 261-1337	Lacayo, Myriam	GP	0199	18+	English Spanish

PRIMARY CARE PHYSICIANS

Miami - Dade County

South West

Medical Center	Address/Phone Number	M.D.	Spec.	PCP #	Age	Lang.
Jay Franklin, M.D., P.A.	8525 SW 92nd St #D14 Miami, FL 33156 (305) 271-4904	Franklin, Jay C.	PED	0013	0-21	English Spanish
Doctors Medical Centers	5521 SW 8th St. Miami, FL 33134 (305) 685-5688 Ext. 6101	Figueredo, Romel Torralbas, Alfredo Vegas, Maria Palomino, Mario	IM PED FP GP	0091 0091 0091 0091	18+ 0-18 1+ 18+	English Spanish
Hispanic Healthcare Center	1774 SW 8th St., #A Miami, FL 33135 (305) 642-7474	Canino, Pablo	PED	0285	0+	English Spanish
CONTINUCARE Flagler	2600 West Flagler Street Miami, FL 33135 (305) 631-0660	Gipps, Paul Sanchez, Mirel Llantada, Roberto Marichal, Jose R. Andux, Luis	IM PF GP IM IM	0152 0152 0152 0152 0152	18+ 17+ 15+ 18+ 18+	English Spanish
CONTINUCARE Flagler Pediatrics	2526 West Flagler Street Miami, FL 33135 (305) 644-0067	Armas, Amelia Florin, Mirta Guerra-Negrete, Yamile	PED PED PED	0180 0180 0180	0-18 0-18 0+	English Spanish
CONTINUCARE Homestead	442 Washington Avenue Homestead, FL 33030 (305) 245-0200	Sandoval, Gloria Martinez, Leon Hernandez, Dinorah	IM FP PA	0186 0186 0186	18+ 0+ 19+	English Spanish
CONTINUCARE Bird Road	8608 SW Bird Road Miami, FL 33155 (305) 551-3200	Kremer, Benjamin Ghanem, Bajhat	IM FP	0182 0182	17+ 17+	English Spanish
CONTINUCARE Perrine	18853 SW 117 Avenue Miami, FL 33177 (305) 238-1111	Sanchez-Rivers, Ricardo Lopez-Alvar, Alexander	GP IM	0149 0149	15+ 15+	English Spanish
CONTINUCARE Cutler Ridge	11000 SW 211 Street Miami, FL 33189 (305) 254-1500	Lopez-Alvar, Alexander Lizarraga, Gabriel Flores, Lucky Kernisant, Guylene	IM IM FP ARNP	0150 0150 0150 0150	15+ 15+ 15+ 15+	English Spanish
CONTINUCARE Kendall	11701 Mills Drive Miami, FL 33183 (305) 270-2700	Defas, June Liu, Lai-Yuan Vidan, Marcia	IM IM IM	0151 0151 0151	15+ 15+ 15+	English Spanish Chinese
South FI Internist Group, P.D.	1800 S.W. 27 Ave., #604 Miami, FL 33145 (305) 446-0566	Jorge Loreda, D.O.	IM	0269	18+	English Spanish
Urgent Family Care (*)	5673 SW 137 Avenue Miami, FL 33183 (305) 385-3949	Campillo, Luis	FP	0305	1+	English Spanish

PRIMARY CARE PHYSICIANS

Broward County

North West

Medical Center	Address/Phone Number	M.D.	Spec.	PCP #	Age	Lang.
Coconut Creek Pediatrics	4400 W. Sample Rd., # 122 Coconut Creek, FL 33073 (954) 978-6130	Wajid, Arif	PED	0274	0-19	English Spanish Urdu
Palm Court Medical Center	7454 Royal Palm Blvd. Margate, FL 33063 (954) 973-0030	Dawkins, Roger	IM	0031	15+	English Spanish
The Family Practice of Margate	6000 W. Atlantic Ave. Margate, FL 33063 (954) 973-6111	Gajraj, Mohamed	FP	0265	10+	English Spanish
Richard Polakoff	7170 Nob Hill Rd. Tamarac, FL 33321 (954) 726-8267	Polakoff, Richard	IM	0100	18+	English
Richard Polakoff	4850 W.Oakland Park Blvd,#143 Lauderdale Lakes, FL 33313 (954) 676-9980	Polakoff, Richard	IM	0101	18+	English
Bob Gajraj	4966 Pine Island Rd. Lauderhill, FL 33351 (954) 748-8600	Gajraj, Mohamed	FP	0028	10+	English Spanish
Sunset Strip Medical Center (*)	6929 Sunset Strip Sunrise, Fl 33313 (954) 578-0200	Serrano, Eduardo, P.A. Matos-Pichardo, Elsa Pare-Monderson, Sabryna	PA FP FP	0107 0107 0107	15+ 10+ 10+	English Spanish
Margate Medical Center (*)	7200 W. Commercial Blvd. Suite # 201 Lauderhill, FL 33319 (954) 533-7614	Frial-Carrasco, Lucille	FP	0115	0+	English Spanish
Total Rehab & Medical Centers (*)	5409 N. State Road 7 Tamarac, FL 33319 (954) 733-3339	Trujillo, Yaneth	FP	0140	18+	English Spanish
CONTINUCARE Margate	5643 NW 29th Street Margate, FL 33063 (954) 979-6900	Velazquez, Eddie Quevedo, Araceli	IM IM	0154 0154	18+ 17+	English Spanish
CONTINUCARE Tamarac	7101 W. McNab Rd. # 101 Tamarac, FL 33321 (954) 722-5600	Demar, Susan Gomez, Idelfonso Alleyne, Diahann	PA IM FP	0155 0155 0155	18+ 18+ 21+	English Spanish
CONTINUCARE Sunrise	2900 N. University Drive Sunrise, FL 33322 (954) 748-8200	Demar, Susan Weinstein, Morton Del Cristo, Roberto	PA IM IM	0156 0156 0156	18+ 15+ 18+	English Spanish
CONTINUCARE Plantation	6971 W. Sunrise Blvd. # 201 Plantation, FL 33313 (954) 321-7700	Saliba, Dominique Dixon, Tony Dubrovskaya, Yevgeniya	FP IM IM	0157 0157 0157	17+ 15+ 15+	English Spanish French Creole Russian

PRIMARY CARE PHYSICIANS**Broward County****North East**

Medical Center	Address/Phone Number	M.D.	Spec.	PCP #	Age	Lang.
Associates in Internal Medicine	2201 NE 52 St. Suite # 206 Lighthouse Point, FL 33064 (954) 420-5110	Qureshi, Zahid	IM	0278	18+	English Urdu
Kidz-In-Pediatrics	3170 N. Federal Hwy. Suite # 214 Lighthouse Point, FL 33064 (954) 786-2200	Hidalgo, Ausberto	PED	0229	0-21	English Spanish
Frank Gutierrez, M.D. (*)	2548 N. Federal Hwy. Fort Lauderdale, FL 33305 (954) 563-8755	Gutierrez, Frank	FP	0255	17+	English Spanish
C. B. Singh, M.D., P.A. (*)	2620 N. Andrews Ave., #100 Ft. Lauderdale, FL33311 (954) 565-7686	Singh, Chatoor	GP	0267	14+	English

PRIMARY CARE PHYSICIANS

Broward County

South West

Medical Center	Address/Phone Number	M.D.	Spec.	PCP #	Age	Lang.
Arleen Richards, M.D. (*)	201 NW 70th Avenue Suite # C Plantation, FL 33317 (954) 473-0075	Richards, Arleen	IM	0263	14+	English
Rolando Gonzalez M.D., P.A.	2229 N. Commerce Pkwy. Suite # D-103 Weston, FL 33326 (954) 577-5579	Gonzalez, Rolando	IM	0077	15+	English Spanish
Hernando Alvarez, M.D. (*)	2300 N. Commerce Parkway Suite # 321 Weston, FL 33326 (954) 217-3611	Alvarez, Hernando	FP	0167	10+	English Spanish
CONTINUCARE Davie	4801 S. University Drive Suite # 113 Davie, FL 33328 (954) 434-8588	Connolly, Carey Lopez, Mayte Luna, Jorge	IM PA FP	0158 0158 0158	18+ 18+ 15+	English Spanish French
Pines Total Health Center (*)	233 North University Drive Pembroke Pines, FL 33024 (954) 983-1119	Pantaleon, Eric	GP	0108	18+	English Spanish French Creole
Total Rehab & Medical Centers (*)	12177 Pembroke Road Pembroke Pines, FL 33025 (954) 436-0555	Trujillo, Yaneth Soto, Silvia	FP PA	0139 0139	18+ 12+	English Spanish
Palm Springs Pediatric Association	17901 NW 5th Street Suite # 103 Pembroke Pines, FL 33029 (954) 442-8888	Hidalgo, Ausberto	PED	0058	0-21	English Spanish
CONTINUCARE Pembroke Pines	460 N. University Drive Pembroke Pines, FL 33024 (954) 437-4004	Junco, Hector	FP	0159	15+	English Spanish Portug.
Yolaine Chamblin, M.D., P.A.	8910 Miramar Pkwy Suite # 117 Miramar, FL 33025 (954) 442-6988	Chamblin, Yolaine	FP	0281	11+	English Spanish French Creole
JAS Medical Management (*)	6151 Miramar Parkway Suite # 104 Miramar, FL 33023 (954) 965-6001	Ahmed, Sultan	FP	0178	6+	English Spanish

PRIMARY CARE PHYSICIANS

Broward County

South East

Medical Center	Address/Phone Number	M.D.	Spec.	PCP #	Age	Lang.
NOVA Southeastern UNIVERSITY	3200 S. University Drive Fort Lauderdale, FL 33328 (954) 262-4100	Anderson-Worts, Paula	FP	0146	0+	English Spanish
		Arcos, Barbara	FP	0146	0+	
		Bekic, Ronald	FP	0146	0+	
		Blavo, Cirill	PED	0146	0+	
		Bray, Natasha	IM	0146	0+	
		Calzada, Pablo	FP	0146	0+	
		Cherner, Rebecca	FP	0146	0+	
		Cohen, Peter	FP	0146	16+	
		De Gaetano, Hilda	PED	0146	0+	
		De Gaetano, Joseph	FM	0146	0+	
		Faillace, Rogerio	PED	0146	0+	
		Hasty, Robert	IM	0146	0+	
		Hill, Gary	IM	0146	0+	
		Kusienski, Andrew	FP	0146	0+	
		Ledbetter, Susan	FP/GER	0146	0+	
		Packer, Edward	PED	0146	0+	
Pandya, Naushira	IM/GER	0146	0+			
Scott-Holman, Sandi	FP	0146	0+			
CONTINUCARE Hollywood	5201 Hollywood Blvd. Hollywood, FL 33021 (954) 981-5200	Mora, Noel	FP	0160	18+	English
		Demar, Susan	PA	0160	18+	Spanish
H & L Medical Center (*)	6730-A Stirling Road Hollywood, FL 33024 (954) 983-8844	Machado, Ramon	GP	0262	0+	English
		Arce-Nunez, Esperanza	FP	0262	0+	Spanish
Physician Associates of Broward, Inc.	10000 Stirling Rd., # 12 Cooper City, FL 33024 (954) 322-3603	Mora, Salvador	IM	0228	16+	English Spanish
NOVA Southeastern UNIVERSITY	3301 College Avenue Fort Lauderdale, FL 33314 (954) 262-4100	McCarthy, Heather	FP	0161	0+	English
		Kusienski, Andrew	FP	0161	0+	
		Wallace, Elaine	FP	0161	0+	

PRIMARY CARE PHYSICIANS

Palm Beach County

North

Medical Center	Address/Phone Number	M.D.	Spec.	PCP #	Age	Lang.
Palm Beach Medical Clinic	9123 North Military Trail Suite # 102 Palm Beach Gardens, FL 33410 (561) 630-9339	Woyome, Stephen	IM	0193	18+	Creole English Spanish Portug.

PRIMARY CARE PHYSICIANS

Palm Beach County

Central

Medical Center	Address/Phone Number	M.D.	Spec.	PCP #	Age	Lang.
Polyclinique de West Palm Beach (*)	734 Belvedere Road West Palm Beach, FL 33405 (561) 835-8385	Cadet, Joseph	FP	0141	0+	English Spanish French Creole
Medical Coral Way Center (*)	1401 S. Military Trail Suite # C West Palm Beach, FL 33415 (561) 429-3122	Washington, Niermala Almeida Fausto	GP PA	0318 0318	1+ 1+	English Spanish
Argentina Brito	2070 South Military Trail Suite # 106 West Palm Beach, FL 33415 (561) 968-8462	Brito, Argentina	IM	0060	20+	English Spanish
Centro Medico Latinoamericano	1217 C. South Military Trail West Palm Beach, 33415 (561) 642-6309	Valladares, Horacio	GP	0290	13-65	English Spanish
David Miller, M.D., P.A.	12977 Southern Boulevard PALMS WEST HOSPITAL Suite # 202 Loxahatchee, FL 33470 (561) 204-3620	Miller, David Jackson, Kristen	PED/IM PA	0215 0215	0+ 0+	English Spanish
Advent Family Practice (*)	1447 Medical Park Blvd. Suite # 405 Wellington, FL 33414 (561) 792-7484	Kankam, Edward Kankam, Cygethia Woyome, Stephen	FP FP IM	0194 0194 0194	0+ 0+ 18+	English Spanish French Creole
Israel Machin, M.D., P.A.	1511 Forrest Hill Boulevard Suite # 3 Lake Clarke Shore, FL 33406 (561) 433-3556	Machin, Israel	GP	0162	18+	English Spanish
Family Healthcare Services (*)	1520 10th Avenue Suite B Lake Worth, FL 33460 (561) 540-1657	Alexandre, Serge	IM	0219	0-99	English Creole

PRIMARY CARE PHYSICIANS

Palm Beach County

South

Medical Center	Address/Phone Number	M.D.	Spec.	PCP #	Age	Lang.
Boca Family Practice	7280 W. Palmetto Park Rd. Boca Raton, FL 33433 (561) 391-6552	Bob M. Gajraj	FP	0266	10+	English Spanish
North General Center of Medicine	1550 North Federal Highway Suite # 16 Boyton Beach, FL 33435 (561) 733-2929	Renelien, Jean	IM	0197	0+	English Spanish French Creole
Family Healthcare Services (*)	1483 S. Congress Avenue Delray Beach, FL 33445 (561) 276-8444	Alexandre, Serge	IM	0220	0-99	English Creole
Polyclinique de West Palm Beach (*)	5353 West Atlantic Avenue Suite # A-B Delray Beach, FL 33484 (561) 276-3000	Cadet, Joseph	FP	0142	0+	English Spanish French Creole
Lake Ida Medical Center (*)	2605 W. Atlantic Avenue Suite # D101 Delray Beach, FL 33445 (561) 279-0991	Sitahall, Lorelli Dorsainvil, Pierre	PED IM	0196 0196	0-18 18+	English Spanish French Creole
Pediatrics by the Sea	285 SE 5th Avenue Delray Beach, FL 33483 (561) 272-8991	Bradford, Bradley Kuhns, Karen	PED IM	0114 0114	0-25 21+	English Spanish Creole

URGENT CARE CENTERS

MIAMI-DADE COUNTY

Address	Phone	Hours of Operation	Fee Schedule
 TAKE CARE CLINIC 4895 East Palm Avenue Hialeah, FL 33012	(866) 825-3227	Mon-Fri 8:00am-7:30pm Sat-Sun 9:30am-5:00pm	\$58.50
 TAKE CARE CLINIC 4200 SW 8 Street Miami, FL 33134	(866) 825-3227	Mon-Fri 8:00am-7:30pm Sat-Sun 9:30am-5:00pm	\$58.50
 TAKE CARE CLINIC 4010 SW 137 Avenue Miami, FL 33175	(866) 825-3227	Mon-Fri 8:00am-7:30pm Sat-Sun 9:30am-5:00pm	\$58.50
 TAKE CARE CLINIC 12295 North Biscayne Blvd. North Miami, FL 33181	(866) 825-3227	Mon-Fri 8:00am-7:30pm Sat-Sun 9:30am-5:00pm	\$58.50
Florida Urgent Care & Walk-In Center 5590 West 20th Ave, Suite # 101 Hialeah, FL 33016 (Also a Lab. Analysis Facility)	(305) 827-3303	Mon-Fri 8:00am-8:00pm Saturday 10:00am-8:00pm Sunday 10:00am-6:00pm	LEVEL I - \$ 85 (Visit + Basic Lab) LEVEL II - \$ 150 (Visit + Basic Lab, EKG & X-Ray) LEVEL III - \$ 180 (Visit + Special Comprehensive treatment, Stitches, etc.)
Elite Health & Rehabilitation Urgent Care Center 6450 West 21 Court, Suite # 200 Hialeah, FL 33016 (Also a Lab. Analysis Facility)	(305) 698-0806	Mon-Fri 8:00am-7:00pm Saturday 8:00am-4:00pm	\$ 85.00 Visit + Basic Lab \$150.00 Visit + Basic Lab, EKG, & X-Ray \$180.00 Visit + Special Comprehensive Treatment, Stitches, etc.
North Miami Medical Urgent Care Center 823 NE 125 Street North Miami, FL 33161	(305) 895-7840	Mon-Fri 9:00am-7:00pm Saturday 9:00am-1:00pm	LEVEL I - \$ 60 (Visit + Basic Lab) LEVEL II - \$ 80 (Visit + Basic Lab, EKG & X-Ray) LEVEL III - \$ 100 (Visit + Special Comprehensive treatment, Stitches, etc.)
IMED Urgent Care Center 1770 NE Miami Gardens Drive North Miami Beach, FL 33179	(305) 949-7990	Mon-Fri 9:00am-9:00pm Saturday 10:00am-8:00pm Sunday 10:00am-6:00pm	\$100.00 Includes X-Ray, EKG, CBC, CMP, Nebulizer Tympanometry, Spirometry
Campbell Urgent Care 1855 NE 8th Street Homestead, FL 33033	(305) 242-8025	Mon-Fri 8:00am-8:00pm Sat-Sun 10:00am-4:00pm	Basic Visit Fee \$ 100; + 1 Lab \$ 125; + 2 Labs \$ 150 Basic Visit + EKG \$ 150 Basic Visit + Laceration or X-Ray \$ 175 Other Services at 30% Discount OFF Fee Schedule
Florida Urgent Care & Walk-In Center 1250 S. Miami Avenue, Suite # 101 Miami, FL 33130	(305) 571-6250	Mon-Fri 9:00am-8:00pm Saturday 10:00am-4:00pm Sunday 10:00am-4:00pm	LEVEL I - \$ 85 (Visit + Basic Lab) LEVEL II - \$ 150 (Visit + Basic Lab, EKG & X-Ray) LEVEL III - \$ 180 (Visit + Special Comprehensive treatment, Stitches, etc.)
Urgent Family Health Care 5673 SW 137 AVE Miami, FL 33183 (Also a Lab. Analysis Facility)	(305) 387-0350	Mon-Fri 8:30am-8:30pm Saturday 8:30am-5:00pm	\$85.00 Services (Basic Lab Tests and EKG if necessary)
Doctors After Hours KENDALL Westbird Shopping Plaza 11479 SW 40 Street Miami, FL 33165	(305) 228-1414	Monday 9:00am-6:00pm Tuesday 9:00am-2:00pm Wednesday 9:00am-6:00pm Thursday 9:00am-5:00pm Friday 9:00am-6:00pm	\$ 85.00 Visit + Basic Lab \$150.00 Visit + Basic Lab, EKG, & X-Ray \$180.00 Visit + Special Comprehensive Treatment, Stitches, etc.
Fast Care 20601 E. Dixie Hwy, Suite 340 Aventura, FL 33180	(786) 923-4000	Mon-Fri 8:30am-7:00pm Saturday 9:30am-1:30pm	\$120.00 Services (Basic Lab work)
Doctors After Hours HIALEAH 551 East 49 Street Fist Floor Hialeah, FL 33013	(305) 688-1177	Mon-Fri 9:00am-6:00pm	\$ 85.00 Visit + Basic Lab \$150.00 Visit + Basic Lab, EKG, & X-Ray \$180.00 Visit + Special Comprehensive Treatment, Stitches, etc.

URGENT CARE CENTERS

BROWARD COUNTY

Address	Phone	Hours of Operation	Fee Schedule
Walgreens TAKE CARE CLINIC 4600 Coconut Creek Parkway Coconut Creek, FL 33063	(866) 825-3227	Mon-Fri 8:00am-7:30pm Sat-Sun 9:30am-5:00pm	\$58.50
Walgreens TAKE CARE CLINIC 11105 Sirling Road Cooper City, FL 33328	(866) 825-3227	Mon-Fri 8:00am-7:30pm Sat-Sun 9:30am-5:00pm	\$58.50
Walgreens TAKE CARE CLINIC 4601 North State Road 7 Coral Springs, FL 33073	(866) 825-3227	Mon-Fri 8:00am-7:30pm Sat-Sun 9:30am-5:00pm	\$58.50
Walgreens TAKE CARE CLINIC 340 SW 24th Street Fort Lauderdale, FL 33315	(866) 825-3227	Mon-Fri 8:00am-7:30pm Sat-Sun 9:30am-5:00pm	\$58.50
Walgreens TAKE CARE CLINIC 2855 Stirling Road Fort Lauderdale, FL 33312	(866) 825-3227	Mon-Fri 8:00am-7:30pm Sat-Sun 9:30am-5:00pm	\$58.50
Walgreens TAKE CARE CLINIC 601 East Commercial Boulevard Oakland Park, FL 33334	(866) 825-3227	Mon-Fri 8:00am-7:30pm Sat-Sun 9:30am-5:00pm	\$58.50
Walgreens TAKE CARE CLINIC 18310 Pines Boulevard Pembroke Pines, FL 33029	(866) 825-3227	Mon-Fri 8:00am-7:30pm Sat-Sun 9:30am-5:00pm	\$58.50
Walgreens TAKE CARE CLINIC 8790 West McNab Road Tamarac, FL 33321	(866) 825-3227	Mon-Fri 8:00am-7:30pm Sat-Sun 9:30am-5:00pm	\$58.50
Weston Regional Health Park 2300 N. Commerce Parkway Weston, FL 33326	(954) 217-5700	Mon-Fri 8:00am-9:00pm Sat-Sun 9:00am-8:00pm	LEVEL I - \$ 80 (Visit Only) LEVEL II - \$ 110 (Visit and Lab) LEVEL III - \$ 145 (Visit, X-Ray & Lab if needed)
IMED Urgent Care Center 6240 Coral Ridge Drive, Suite # 105 Coral Springs, FL 33076	(954) 340-5311	Mon-Fri 9:00am-9:00pm Saturday 10:00am-8:00pm Sunday 10:00am-6:00pm	\$100.00 Includes X-Ray, EKG, CBM, CMP, Nebulizer Tympometry, Spirometry
US Healthworks 1100 W. Commercial Blvd. # 120 Fort Lauderdale, FL 33309	(954) 564-2592	Mon-Fri 7:00am-7:00pm	LEVEL I - \$ 95 (Office Visit) LEVEL II - \$140 (Visit + Lab + X-Ray + EKG) LEVEL III - \$195 (Visit + Special Comp. Treatment + Stitches, etc)
SOLANTIC POMPANO BEACH 1611 South Federal Highway Pompano Beach, FL 33062	(954) 580-4001	Mon-Fri 8:00am-8:00pm Sat-Sun 9:00am-5:00pm	LEVEL I - \$ 75 (Visit) LEVEL II - \$ 119 (Visit + Lab.) LEVEL III - \$ 169 (Visit + 2 or more Procedures)
US Healthworks 7676 Peters Road, Suite C. Plantation, FL 33324	(954) 474-4403	Mon-Fri 8:00am-7:00pm Saturday 9:00am-5:00pm	LEVEL I - \$ 95 (Office Visit) LEVEL II - \$140 (Visit + Lab + X-Ray + EKG) LEVEL III - \$195 (Visit + Special Comp. Treatment + Stitches, etc)
West Broward Urgent Care 1911 North Pine Island Rd. Plantation, FL 33322	(954) 476-3024	Mon-Fri 9:00am-7:00pm Sat-Sun 9:00am-3:00pm	\$120.00 First Visit \$90.00 Following Visits
US Healthworks 8290 North University Drive Tamarac, FL 33321	(954) 722-7186	Mon-Fri 8:00am-8:00pm Saturday 8:00am-4:00pm	LEVEL I - \$ 95 (Office Visit) LEVEL II - \$140 (Visit + Lab + X-Ray + EKG) LEVEL III - \$195 (Visit + Special Comp. Treatment + Stitches, etc)
Total Family Urgent Care 1168 North State Road 7 Lauderhill, FL 33313	(954) 581-7700	Mon-Fri 9:00am-7:00pm Saturday 9:00am-4:00pm Sunday 10:00am-6:00pm	LEVEL I - \$50 (Office Visit) LEVEL II - \$ 50 (Visit + Lab, EKG & X-Ray at ProMed Rates) LEVEL III - \$ 180 Incision & Drainage of Abscess \$130 Stitches
Mercy Family & Urgent Care 3511 NW 8th Avenue, Suite # 1-2 Pompano Beach, FL 33064	(954) 783-0621	Mon-Fri 9:00am-7:00pm Saturday 9:00am-1:00pm	\$80.00 First Visit \$60.00 Following Visits
SOLANTIC PEMBROKE PINES 9035 Pines Boulevard Pembroke Pines, FL 33024	(954) 378-0333	Mon-Fri 8:00am-8:00pm Sat-Sun 8:00am-4:00pm	LEVEL I - \$ 75 (Visit) LEVEL II - \$ 119 (Visit + 1 Procedure) LEVEL III - \$ 169 (Visit + 2 or more Procedures)
Florida Urgent Care Walk-In Center 17901 NW 5 Street, # 101 Pembroke Pines, FL 33029 (Also a Lab. Analysis Facility)	(954) 442-8380	Mon-Fri 8:00am-9:00pm Saturday 8:00am-8:00pm Sunday 9:00am-6:00pm	LEVEL I - \$ 85 (Visit + Basic Lab) LEVEL II - \$ 150 (Visit + Basic Lab, EKG & X-Ray) LEVEL III - \$ 180 (Visit + Special Comprehensive treatment, Stitches, etc.)
SOLANTIC COCONUT CREEK 4450 State Road 7 Coconut Creek, FL 33073	(954) 633-1422	Mon-Fri 8:00am-8:00pm Sat-Sun 8:00am-4:00pm	LEVEL I - \$ 75 (Visit) LEVEL II - \$ 119 (Visit + 1 Procedure) LEVEL III - \$ 169 (Visit + 2 or more Procedures)

URGENT CARE CENTERS

PALM BEACH COUNTY

Address	Phone	Hours of Operation	Fee Schedule
<i>Walgreens</i> TAKE CARE CLINIC 101 North main Street Belle Glade, FL 33430	(866) 825-3227	Mon-Fri 8:00am-7:30pm Sat-Sun 9:30am-5:00pm	\$58.50
<i>Walgreens</i> TAKE CARE CLINIC 21880 State Road # 7 Boca raton, FL 33428	(866) 825-3227	Mon-Fri 8:00am-7:30pm Sat-Sun 9:30am-5:00pm	\$58.50
<i>Walgreens</i> TAKE CARE CLINIC 6458 Linton Boulevard Delray Beach, FL 33484	(866) 825-3227	Mon-Fri 8:00am-7:30pm Sat-Sun 9:30am-5:00pm	\$58.50
<i>Walgreens</i> TAKE CARE CLINIC 6025 Llake Worth Road Greenacres, FL 33463	(866) 825-3227	Mon-Fri 8:00am-7:30pm Sat-Sun 9:30am-5:00pm	\$58.50
<i>Walgreens</i> TAKE CARE CLINIC 12001 Southern Boulevard Loxahatchee, FL 33470	(866) 825-3227	Mon-Fri 8:00am-7:30pm Sat-Sun 9:30am-5:00pm	\$58.50
MD Now Medical Centers 4570 Lantana Road Lake Worth, FL 33463	(561) 963-9881	Mon-Sun 8:00am-8:00pm	Basic Visit \$ 130.00 Comprehensive Visit incl. X-Ray, Lab, EKG, procedures \$ 180 Follow up visits for wound care \$ 90.00
Delray Advanced Medical 1836 S. Federal Highway Delray Beach, FL 33483	(954) 486-5603	Mon-Fri 9:00am-5:00pm	Level I: Care Consultation \$ 85.00 Level II: Care Consultation w/Basic Lab \$ 120 Level III: Consultation w/ Basic Lab, EKG, & X-Ray) \$180
US Healthworks 1786 NW 2nd Ave. Boca Raton, Fl , 33432	(561) 368-6920	Mon-Fri 8:00am-6:00pm Saturday 9:00am-1:00pm Sunday 9:00am-1:00pm	LEVEL I - \$ 95 (Office Visit) LEVEL II - \$140 (Visit + Lab + X-Ray + EKG) LEVEL III - \$195 (Visit + Special Comprehensive Treatment + Stitch)
MD Now Medical Center 7035 Beracasa Way, Suite # 105 Boca Raton, FL 33433	(561) 361-1515	Mon-Sun 8:00am-8:00pm	Basic Visit \$ 130.00 Comprehensive Visit Incl. X-Ray & Lab, EKG, Procedures \$ 180 Follow up visits for wound care \$ 90.00
MD Now Medical Center 9060 North Military Trail Palm Beach Gardens, FL 33410	(561) 622-2442	Mon-Sun 8:00am-8:00pm	Basic Visit \$ 130.00 Comprehensive Visit Incl. X-Ray & Lab, EKG, Procedures \$ 180 Follow up visits for wound care \$ 90.00
Coach Comp America 400 North Congress Avenue # 110 West Palm Beach, FL 33401	(561) 640-7505	Mon-Fri 7:30am-6:00pm	\$ 45.00 Per visit
MD Now Medical Centers 9060 North Military Trail Palm Beach Gardens, FL 33410	(561) 622-2442	Mon-Sun 8:00am-8:00pm	Basic Visit \$ 130.00 Comprehensive Visit incl. X-Ray, Lab, EKG, procedures \$ 180 Follow up visits for wound care \$ 90.00
Coach Comp America 11327 Okeechobee Boulevard Royal Palm Beach, Fl 33411	(561) 795-4565	Mon-Fri 8:00am-7:00pm Sat-Sun 9:00am-3:00pm	\$45.00 Per visit
MD Now Medical Center Walk-In Center 11551 Southern Boulevard Royal Palm Beach, FL 33411	(561) 798-9411	Mon-Sun 8:00am-8:00pm	Basic Visit \$ 130.00 Comprehensive Visit incl. X-Ray, Lab, EKG, procedures \$ 180 Follow up visits for wound care \$ 90.00
Coach Comp America 400 North Congress Avenue # 110 West Palm Beach, FL 33401	(561) 640-7505	Mon-Fri 7:30am-6:00pm	\$ 45.00 Per visit