

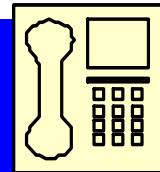
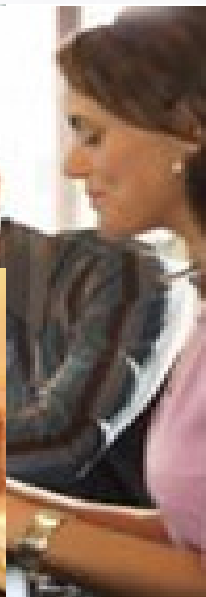
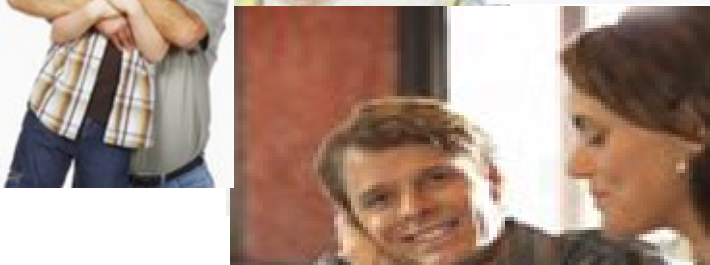
# ProMedical Plan<sup>®</sup>



Primary Care Physicians  
Médicos Primarios



**CENTRAL FLORIDA**



**1-866-PROMEDI**

# PRIMARY CARE PHYSICIANS

## Orange County

Medical Center	Address/Phone Number	M.D.	Spec.	PCP #	Age	Lang.
<small>CFH</small> <b>Apopka Family Medicine</b>	205 North Park Avenue Suite # 108 Apopka, FL 32703 (407) 880-0011	Durgabhav Valay Nereida Abreu Riazunissa Arifuddin	FP IM PED	02390415 02390416 02390435	18+ 18+ 0-21	English Spanish Indian
<small>IND</small> <b>Westside Medical</b>	5084 W. Colonial Dr. Orlando, FL 32808 (407) 822-4739	Roman Mosai	IM	02460424	5+	English
<small>SUN</small> <b>Integrated Healthcare Center of America</b>	5804 Lake Underhill Rd. Orlando, FL 32807 (407) 281-0470	Miguel Burgos	FP	02790477	2+	English Spanish
<small>CFH</small> <b>Primary Care Family Health Center</b>	1339 Arlington St. Orlando, FL 32805 (407) 648-5343	Emmanuel Nau	FP	02430420	0+	English Spanish Creole French
<small>SUN</small> <b>Unlimited Medical Services of Florida</b>	5580 E. Grant Street Orlando, FL 32822 (321) 235-6230	Norberto Fleites	GP	02800479	0+	English Spanish
<small>IND</small> <b>Family Health Center</b>	1151 Blackwood Ave. Suite # 150 Ocoee, FL 34761 (407) 297-3838	Nadia Sadek	FP	02440422	18+	English Arabic
<small>SUN</small> <b>Oscar M. Merida, M.D.</b>	12200 Menta Street Orlando, FL 32837 (407) 857-2817	Oscar Merida	PED	02970502	0-18	English Spanish

# PRIMARY CARE PHYSICIANS

## Osceola County

Medical Center	Address/Phone Number	M.D.	Spec.	PCP #	Age	Lang.
<small>IND</small> <b>PM PEDIATRIC</b>	327 West Cypress Street Kissimmee, FL 34741 (407) 483-0672	Aziz Imtiaz	PED	02570436	0+	English
<small>IND</small> <b>Tri County Doctors</b>	326 W. Oak Street Kissimmee, FL 34741 (407) 932-3666	A. Razzak Tai	IM	02760466	12+	English Hindi Urdu
<small>IND</small> <b>All A Round Aesthetics Osceola Physician Management</b>	801 W. Oak Street Suite # 202 Kissimmee, FL 34741 (407) 933-7119	Mark J. Round	IM	02520430	18+	English Spanish
<small>IND</small> <b>PM PEDIATRIC</b>	1000 Cypress Parkway Kissimmee, FL 34759 (407) 483-0672	Aziz Imtiaz	PED	02760436	0+	English
<small>IND</small> <b>Chappel Family Practice</b>	222 Broadway Suite # 301 Kissimmee, FL 34741 (407) 846-8180	Keron Ferguson	FP	02710464	0+	English
<small>IND</small> <b>Chappel Family Practice</b>	222 Broadway Suite # 301 Kissimmee, FL 34741 (407) 846-8180	Marcus Merriweather	FP	02710465	0+	English Spanish

# PRIMARY CARE PHYSICIANS

## Seminole County

Medical Center	Address/Phone Number	M.D.	Spec.	PCP #	Age	Lang.
<small>CFH</small> <b>Associated Family Medicine II</b>	515 West State Rd 434 Suite # 110 Longwood, FL 32750 (407) 830-8600	Richard Shaffer Usha Patel	FP GP	02300402 02300403	18+ 18+	English Hindu
<small>CFH</small> <b>Associated Family Medicine I</b>	320 Sabal Palm Place Suite # 200 Longwood, FL 32779 (407) 788-6399	Zabunnissa Vyas	FP	02310406	10+	English Hindi Gujerati
<small>CFH</small> <b>Tuscawilla Family Medicine</b>	1049 Willa Springs Drive Suite # 1031 Winter Springs, FL 32708 (407) 699-6009	Felicia Jacob	IM	02320408	18+	English Romanian
<small>CFH</small> <b>North Side Family Medicine</b>	1718 Lexington Green Lane Sanford, FL 32771 (407) 268-9661	Amirali Bhalwany	IM	02330409	18+	English
<small>CFH</small> <b>North Side Family Medicine</b>	1718 Lexington Green Lane Sanford, FL 32771 (407) 268-9661	Kenneth Pittman	PED	02330410	0-18	English
<small>CFH</small> <b>Lake Mary Family Medicine Pediatric Associates of Central Florida</b>	109 Timberlachen Circle Lake Mary, FL 32746 (407) 330-0882 Pediatric line	Kenneth Pittman	PED	02340410	0-18	English
<small>CFH</small> <b>Lake Mary Family Medicine Pediatric Associates of Central Florida</b>	109 Timberlachen Circle Lake Mary, FL 32746 (407) 333-9877 General line	Helen Simpson Abreu, Nereida	FP IM	02340411 02340405	18+ 18+	English

**PRIMARY CARE PHYSICIANS**

**Hillsborough County**

<b>Medical Center</b>	<b>Address/Phone Number</b>	<b>M.D.</b>	<b>Spec.</b>	<b>PCP #</b>	<b>Age</b>	<b>Lang.</b>
<small>SUN</small> <b>Toribio Medical Center</b>	6301 Memorial Hwy, # 104 Tampa, FL 33615 (813) 886-0713	Fiordaliza Toribio	18+	0303	IM	English Spanish
<small>SUN</small> <b>Toribio Medical Center</b>	1323 W. Busch Blvd., # A Tampa, FL 33612 (813) 886-0713	Fiordaliza Toribio	18+	0304	IM	English Spanish
<small>21st C</small> <b>North Armenia Medical Center</b>	8004 N. Armenia Ave. Tampa, FL 33604 (813) 933-9131	Robert Burchett	IM	0298	16+	English
<small>21st C</small> <b>North Armenia Medical Center</b>	8004 N. Armenia Ave. Tampa, FL 33604 (813) 933-9131	Todd Rosenthal	IM	0298	16+	English
<small>21st C</small> <b>William Andrews</b>	3105 N. 22 Street Tampa, FL 33605 (813) 972-7543	William Andrews	FP	0291	18+	English
<small>21st C</small> <b>Cesar D. Cruz, M.D., L.L.C.</b>	701 W. M.L.K. Blvd. Suite # 6 Tampa, FL 33603 (813) 237-1106	Cesar Cruz	FP	0302	18+	English Spanish

**PRIMARY CARE PHYSICIANS**

**Hillsborough County**

Medical Center	Address/Phone Number	M.D.	Spec.	PCP #	Age	Lang.
<b>Julia Barriga</b> <small>SUN</small>	5001 E. Busch Boulevard Tampa, FLL 33617 (813) 984-8846	Julia Barriga	PED	0293	0-18	English Spanish
<b>Richard Molloy</b> <small>21st C</small>	Suite # 202 Tampa, FL 33613 (813) 871-0195	Richard P. Molloy	IM	0292	18+	English Romanian
<b>Holistic Pediatric Group</b> <small>SUN</small>	2906 W. Tampa Bay Blvd. Tampa, FL 33607 (813) 879-1985	Avilio Munoz	PED	0294	0-18	English Spanish
<b>Primecare Plant City</b>	1706 Alexander St. Suite B Plant City, FL 33563 (813) 717-9000	Alejandro Diaz	FP	0307	18+	English Spanish
<b>My Pediatrician</b> <small>SUN</small>	1037 Profesional Pk. Dr. Brandon, FL 33511 (813) 684-5959	Alicia Ong	PED	0308	0-18	English Tagalog

# PRIMARY CARE PHYSICIANS

## Polk County

Medical Center	Address/Phone Number	M.D.	Spec.	PCP #	Age	Lang.
<b>Jay Care Medical Center</b>	175 US Hwy 17 North Suite 1 Bartow, FL 33830 (863) 533-8215	Halide Kattan Eric Ranon	IM IM	0311 0311	19+ 18+	English Croatian Tagalog
<b>Pediatric Partners of Winter Haven</b>	409 Central Ave. East Winter Haven, FL 33880 (863) 293-2144	Eiman El Sayed Ashley Gonzalez	PED PED	0316 0316	0-18 0-18	English Spanish
<b>Jay Care Medical Center</b>	950 First Street South Winter Haven, FL 33880 (863) 295-5604	Eric Ranon Taha Dias	IM IM	0312 0312	18+ 19+	Tagalog
<b>Jay Care Medical Center</b>	3522 S. Florida Ave. Suite C-D Lakeland, FL 33803 (863) 644-8459	Halide Kattan	IM	0310	19+	English Croatian
<b>Jay Care Medical Center</b>	135 East First St. Lakeland, FL 33805 (863) 686-2728	Ernesto Aguilera Khin Latt Zaw Min Japinder Singh George Pilapil	FP IM IM IM PED	0309 0309 0309 0309 0309	19+ 19+ 19+ 19+ 0-19	English Filipino Burmese Hindi
<b>Jay Care Medical Center</b>	131 Webb Dr. Davenport, FL 33837 (863) 421-7400	Eric Ranon Jean Claude Desgranges	IM IM	0313 0313	18+ 19+	English Tagalog French